



# **PATGuard Work About 2 User Manual**

## Contents

Disclaimer .....	v
License Agreement .....	vi
Introduction .....	7
Installing PATGuard Work About.....	7
Starting the Program .....	7
Additional Licences .....	9
Unregister .....	9
Evaluation.....	9
Moving the Program to Another PC .....	9
Program Overview .....	9
PATGuard Files .....	10
Upload Files (xpg) .....	10
Download Files (sss) .....	11
PATGuard Work About Records.....	11
Re-locating Assets .....	12
Editing an Asset Record.....	13
Edit Site Name.....	14
Edit Location Name .....	15
Add Site.....	16
Add Location .....	17
Add Assets.....	18
Add Tests.....	19
Test Sequences.....	21
Toolbar.....	23
File .....	23
Edit.....	23
View .....	23
Tools.....	23
Help.....	23
Direct entry of Test Results .....	24
Using Bluetooth.....	27
Using Bluetooth with Microsoft Pocket PC .....	27
Bluetooth Pairing – PrimeTest 300 / 350 .....	29
Bluetooth Pairing – Supernova and Europa PAT Testers .....	29
Using Bluetooth with Windows Mobile v5.0.....	33
Establishing Bluetooth Partnerships – PrimeTest 300 / 350.....	33
Establishing Bluetooth Partnerships – Supernova and Europa PAT Testers.....	33
Establishing Bluetooth Partnerships – PDA .....	33
Upload.....	40
Tagging Assets.....	40
Uploading Assets .....	41
PrimeTest 300 / 350 .....	42
Supernova / Europa PAT Testers.....	42
Download .....	46
PrimeTest 300 / 350 .....	47
Supernova / Europa PAT Testers.....	48
System Requirements.....	53
Accessories.....	53
Warranty and Support .....	53

# Figures

Figure 1: Activation window .....	8
Figure 2: Registration Window .....	8
Figure 3: PATGuard Upload window .....	10
Figure 4: Save As window .....	11
Figure 5: Asset Records display .....	12
Figure 6: Asset Context Menu .....	12
Figure 7: Location Context Menu .....	13
Figure 8: Asset Context Menu .....	13
Figure 9: Edit Asset display .....	14
Figure 10: Site Context Menu .....	14
Figure 11: Edit Site Name display .....	15
Figure 12: Location Context Menu .....	15
Figure 13: Edit Location Name display .....	16
Figure 14: Root Context Menu .....	16
Figure 15: Add Site display .....	17
Figure 16: Site Context Menu .....	17
Figure 17: Add Location display .....	18
Figure 18: Add Asset display .....	18
Figure 19: Save As display .....	19
Figure 20: Add Test display .....	20
Figure 21: Add Test Parameters display .....	20
Figure 22: Edit Test Sequence display .....	21
Figure 23: Add Test display .....	22
Figure 24: Asset Context Menu .....	22
Figure 25: Choose Test Type display .....	24
Figure 26: Tests display .....	24
Figure 27: Test Result Direct Entry display .....	25
Figure 28: Visual Test display .....	26
Figure 29: Download File Browse display .....	26
Figure 30: Start Menu .....	27
Figure 31: Settings Menu .....	28
Figure 32: Bluetooth: Serial Port display .....	28
Figure 33: Bluetooth Manager display .....	29
Figure 34: Connection Wizard display .....	30
Figure 35: Explore a Bluetooth device display .....	30
Figure 36: Bluetooth Browser display .....	31
Figure 37: Bluetooth Service Selection display .....	31
Figure 38: Bluetooth Connection Wizard - final display .....	32
Figure 39: Bluetooth My Shortcuts display .....	32
Figure 40: Start Menu .....	33
Figure 41: Settings Menu .....	34
Figure 42: Bluetooth display .....	34
Figure 43: Bluetooth New Partnership display .....	35
Figure 44: Bluetooth Scanning display .....	35
Figure 45: Bluetooth Device Selection display .....	36
Figure 46: Bluetooth Enter Passkey display .....	36
Figure 47: Bluetooth Partnership Settings display .....	37
Figure 48: Bluetooth Partnerships display .....	37
Figure 49: COM Ports Tab .....	38
Figure 50: Add a Device display .....	38
Figure 51: Bluetooth COM Port display .....	39
Figure 52: COM Port assigned display .....	39

Figure 53: Settings display .....	40
Figure 54: Tagged Assets .....	41
Figure 55: Location Context Menu .....	41
Figure 56: Upload display .....	42
Figure 57: Bluetooth Manager My Shortcuts display .....	43
Figure 58: Connect to the Adaptor.....	44
Figure 59: Brainboxes RS232 Adaptor Connecting.....	44
Figure 60: Adaptor Connected .....	45
Figure 61: Upload display .....	45
Figure 62: Download File Browse display .....	46
Figure 63: Download display .....	47
Figure 64: Bluetooth My Shortcuts display.....	49
Figure 65: Connect to the Adaptor.....	49
Figure 66: Brainboxes RS232 Adaptor Connecting.....	50
Figure 67: Adaptor Connected .....	50
Figure 68: Download File Browse display .....	51
Figure 69: Download display .....	51

## PATGuard Work About

### ***Disclaimer***

Although all Seaward Electronic Ltd. software programs are tested before release, no claim is made concerning the accuracy of the software or its associated documentation. Seaward Electronic Ltd., and Distributors of this software, cannot assume liability or responsibility for any loss or damage arising from the use of this program.

Copyright Notice  
Copyright (c) 2008 Seaward Electronic Ltd.

All rights reserved. No part of this publication or software may be reproduced or transmitted in any form or by any means, electronic or mechanical, including photocopying, recording, or any information storage and retrieval system without the permission in writing from Seaward Electronic Limited.

## License Agreement

This is a legal agreement between you (either an individual or an organisation) and Seaward Electronic Ltd. By installing this software you are agreeing to be bound by the terms of this Agreement. If you do not agree to the terms of this Agreement, do not install the software and promptly return the software and the accompanying items (including written materials and binders or other containers if any) to the place you obtained them for a full refund.

### SOFTWARE LICENCE

- 1. GRANT OF LICENCE.** Seaward Electronic Ltd. grants to you the right to use one copy of the enclosed Seaward Electronic Ltd. software program (the "Software") on a single computer. The Software is in "use" on a computer includes when it is loaded into temporary memory (i.e. RAM) or installed into permanent memory (e.g. hard disk or any other device).
- 2. COPYRIGHT.** The Software is owned by Seaward Electronic Ltd and is protected by copyright laws. Therefore you must treat the Software like any other copyright material (e.g. a book or musical recording). You may not copy the written materials accompanying the Software.
- 3. OTHER RESTRICTIONS.** You may not rent or lease the Software. You may not reverse engineer, decompile, or disassemble the Software than otherwise provided for by law.

**USE ON ONE COMPUTER ONLY.** This license allows the Software to be installed into the permanent memory (hard disk) of only one computer at a time.

**LIMITED WARRANTY.** Seaward Electronic warrants that (a) the Software will perform substantially in accordance with the accompanying written materials for a period of one year from the date of receipt and (b) any hardware accompanying the Software will be free from defects in materials and workmanship under normal use and service for a period of one (1) year from the date of receipt. Any implied warranties on the Software and hardware are limited to one (1) year and one (1) year respectively.

**CUSTOMER REMEDIES.** Seaward Electronics' entire liability and your exclusive remedy shall be at Seaward Electronic' option, repair or replacement of the Software or hardware that does not meet Seaward Electronic' Limited Warranty and which is returned to Seaward Electronic with a copy of your receipt. This Limited Warranty is void if failure of the Software or hardware has resulted from accident, abuse or misapplication. Any replacement Software or hardware will be warranted for the remainder of the original warranty period.

**NO LIABILITY FOR CONSEQUENTIAL DAMAGES.** In no event shall Seaward Electronic Ltd. be liable for any damages whatsoever (including, without limitation, damages for loss of business profits, business interruption, loss of business information, or any other pecuniary loss) arising out of the use of or inability to use this Seaward Electronic product, even if Seaward Electronic has been advised of the possibility of such damages.

**REGISTRATION.** Within seven days of installing the software you are required to register the software with Seaward Electronic Ltd. By registering you acknowledge that you have read this Agreement and understand and agree to be bound by its terms and conditions without exception, deletion or alteration. You also agree that this Agreement sets out in full the Agreement between you and Seaward Electronic Ltd. which supersede any proposal or prior Agreement, oral or written, and any other communication between you and Seaward Electronic relating to the subject matter of this Agreement.

**INDEMNITY.** You agree to indemnify Seaward Electronic Ltd. against any loss damage or expense arising out of or in connection with any unauthorized use, reproduction, sale, making available, by you of the Software including any loss, damage or expense arising out of the subsequent use of the Software by any other person.

**GOVERNING LAW.** This Agreement is governed by the laws of England and Wales.

## Introduction

Welcome to PATGuard Work About, the easy way to work remote from your main PATGuard records database. PATGuard Work About will allow you to open Upload Files created by PATGuard database programs to display the Asset records on the PDA (Personal Digital Assistant). Once opened the Assets can be Uploaded into the appropriate Seaward PAT tester. Or you could simply enter the results of tests and inspections directly into the PATGuard Work About program for later transfer back to the PATGuard database program to update your records. PATGuard Work About can also store download files directly from the PAT tester for later onward transfer to your PATGuard database program.

### *Note*

*The PATGuard Work About program requires a PATGuard Plus v5.2 or other advanced PATGuard database program to already be installed on a PC. The PATGuard Work About program can only transfer and receive data with the Seaward Supernova, Europa PAT or PrimeTest 300 / 350 family of PAT testers directly.*

This program runs on Microsoft Windows CE platform.

## Installing PATGuard Work About

Before installing the program ensure the PDA is docked with the PC (see the User Instructions for the PDA).

Installing PATGuard Work About is easy; simply insert the CD into the CD drive of the PC and the installation should commence automatically.

If the CD does not automatically start up, then use Windows Explorer or other file management applications to select your CD drive, double click with the mouse on the setup.exe file to start the installation.

Follow the on-screen instructions.

## Starting the Program

If PATGuard Work About has been purchased, complete the installation by activating the program. Do this by starting the Register PATGuard Work About program either from the desk top icon or Start Menu on the PC then entering the **Serial Number** from inside the CD ROM case. The Serial Number will then try to activate the program – by default this will be on-line via the Internet. If an Internet connection is not available select an alternative activation method and follow the on-screen instructions.

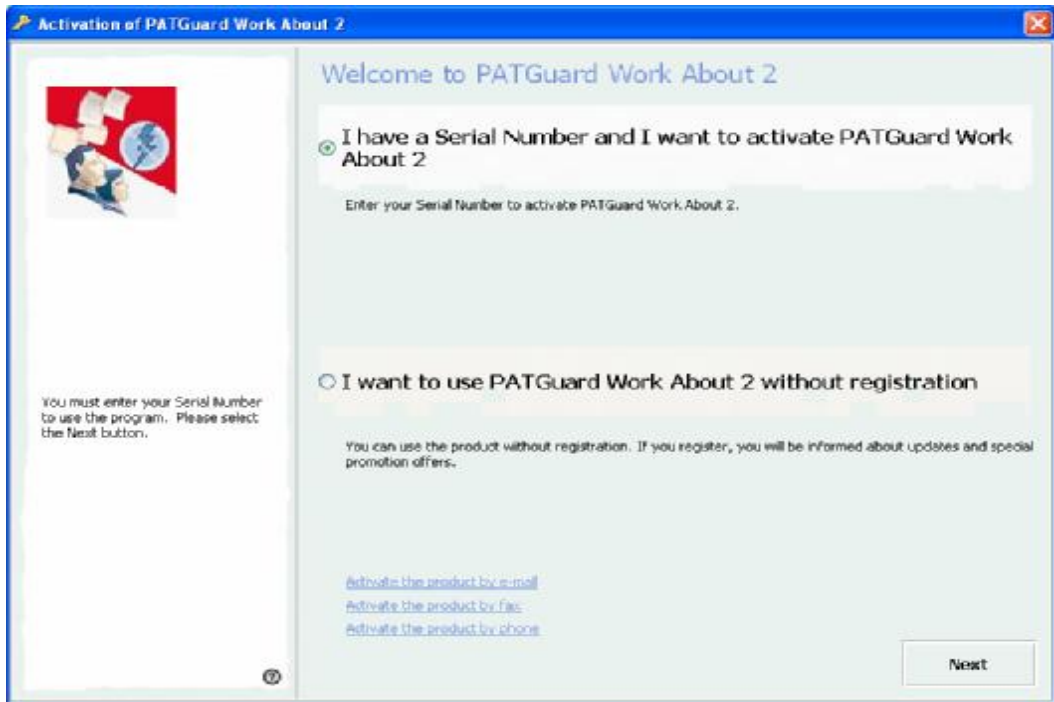


Figure 1: Activation window

Once complete the Registration window below will be displayed, which will enable you to Register a particular PDA and release it from the 30 day time lock. To do this, simply ensure the PDA is in its docking port, select **Connect** and when a **Device Name** appears on the PC screen select **Register**.



Figure 2: Registration Window

You can do this for as many PDAs as you have PATGuard Work About licences. Each PDA registration will use up one licence. Licences are transferable between PDAs in that a licence can be freed up on one PDA by un-registering it and then re-used to licence another PDA.



The PATGuard Work About program can be installed on as many PDAs as the user chooses. However any PDA that cannot be unlocked with a licence will remain in the 30 day time lock. By default only one PDA can be unlocked unless additional licences have been purchased.

### **Additional Licences**

Additional Licences are also available subsequent to program installation which will allow additional PDAs to run the program (see Accessories).

Once initially registered use the **Change License...** button on the Register PATGuard Work About program to open the License Viewer then select **Activation Key**. Enter your new Serial Number to enable the additional licences.

### **Unregister**

Unregister is used to free up a Licence on one PDA in order to assign it to another PDA.

Open the Register PATGuard Work About program on the PC, ensure the relevant PDA is in its docking port, select the **Next >** button until the relevant PDA registration is displayed then simply select **UnRegister** to free up the licence. Assign the Licence to another PDA as described above.

### **Evaluation**

If the PATGuard Work About Evaluation program has been installed no Activation or Registration is possible simply use the PDA program in the Evaluation mode for 30 days.

## **Moving the Program to Another PC**

### *Note*

*This is only possible via an Internet connection and when all PDA's have been unregistered – see Unregister procedure above.*

It is possible to move PATGuard Work About from one PC to another. To do this select the **Change License...** button on the Register PATGuard Work About program to open the License Viewer. Select **Transfer License**.

## **Program Overview**

Asset Upload files are created in a PATGuard database program. These files can be created for different Clients, Sites and Locations. The files can be sent to the PDA using normal PC to PDA file transfer methods for example; email, file synchronisation, Bluetooth, memory cards etc.

When a file is opened in the PATGuard Work About program any Sites, Locations and Assets are displayed as they appear in PATGuard databases, thus giving a graphic display of the Assets' records to be tested and their expected location. This display acts as a work schedule.

The Asset Upload file can be used to Upload Seaward PAT testers directly from the PDA via Bluetooth.

*Note*

*Only the Seaward Supernova, Europa PAT and PrimeTest 300 / 350 family of testers can be Uploaded directly from PATGuard Work About.*

Once the tester has been Uploaded then the testing can proceed. After the testing is complete, the Seaward PAT tester can be Downloaded via Bluetooth to PATGuard Work About.

These downloaded sss files can be transferred to the PC to be processed by PATGuard database programs to update the Asset records.

PATGuard Work About also allows test results to be directly entered, including editing and deleting existing Assets directly at the PDA as well as creating new Asset records and Tests.

## PATGuard Files

PATGuard Work About uses Upload files (xpg) from PATGuard database programs. When opened these files display PATGuard style Asset records.

Direct entry of test information can be carried out to create a Download file (sss) which is then used to update the original PATGuard database. Relocation and additional Sites, Locations, Assets, Test and Test Results can be added as well as edited or deleted.

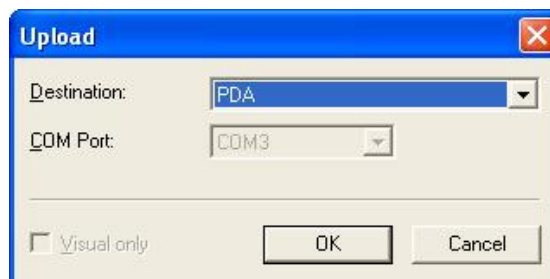
Or the original Upload re-test information can be Uploaded into a Seaward PAT tester so that the tests can be carried out automatically by the tester.

*Note*

*Re-location or deletion of Assets by manual entry will affect the Upload re-test data. That is deleted Assets will not appear in the Upload and any re-location will be true for Uploaded Assets. Otherwise the Upload data sent to the tester will be the original data from the PATGuard database program. Other editing for example adding Assets will not be included in the Uploaded data.*

### Upload Files (xpg)

Asset Uploads can be saved as a file in PATGuard database programs. When Asset Upload is selected, the window below will be displayed.



**Figure 3: PATGuard Upload window**

Select the **Destination: PDA** to create an Upload file, then **OK** to display the following **Save As...** window so that a path and filename can be chosen.



**Figure 4: Save As window**

Upload files have an xpg extension. For a context selected Upload the file name will default to the Site name from where the Upload was initiated. Having set a file name and folder, select **Save** to create the Upload file (xpg). This file can be opened by PATGuard Work About once transferred to the PDA.

### **Download Files (sss)**

Downloads to PATGuard database programs can be captured as an sss file for later processing by the program. Similarly, downloads to PATGuard Work About via Bluetooth can be captured and stored on the PDA for later transfer to the PC and processing by the PATGuard database program.

Also direct-entry of Test Results are stored in an sss file format on the PDA and these files can be processed by PATGuard database programs as above. These files cannot be opened in PATGuard Work About and are used to update PATGuard database programs only.

## **PATGuard Work About Records**

Select the PATGuard Work About program icon to start the program. Then from the **File** pop-up select **New** to create new records or **Open** to open an Upload file (xpg) that originated from a PATGuard database program.

When an Upload file (xpg) is opened in PATGuard Work About, a path and database filename is displayed. This is the path and database filename from where the Upload file originated in the PATGuard database program. This is important as it identifies the database that must be updated by a subsequent sss file created by PATGuard Work About.

Selecting the + symbol next to the database path will cause the next level of the tree to be displayed, which consists of all the Sites associated with the Upload file.

A + symbol next to a Site will indicate that Locations are contained within that Site. Selecting this will cause the Locations associated with the Site to be displayed.

Choosing a particular Location will cause the Assets to be displayed at the selected Location.

For Sites that do not have Locations, selecting the Site will cause the Assets to be displayed at the selected Site.

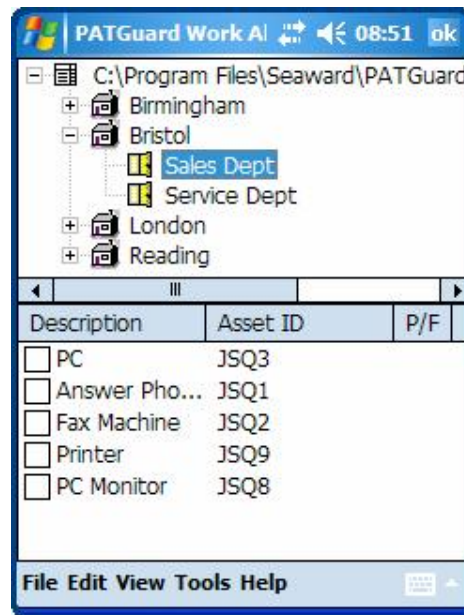


Figure 5: Asset Records display

### **Re-locating Assets**

Assets can be re-located in PATGuard Work About. To do this choose the Asset and hold the stylus on the Asset until the Context menu pops up.

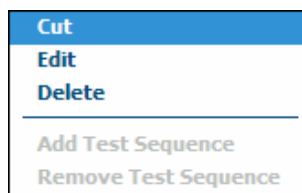
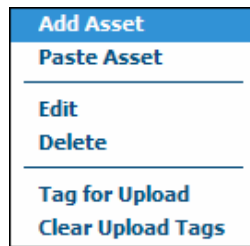


Figure 6: Asset Context Menu

Select **Cut**. Select and hold the stylus on the Site or Location where you wish to re-locate the Asset, to display the context menu.



**Figure 7: Location Context Menu**

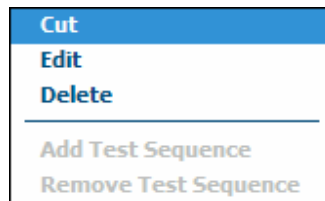
Select **Paste Asset** to complete the re-location.

*Note*

*For Asset tracking – re-location in PATGuard Work About within an Upload file from a PATGuard database program the following applies: Assets can not be re-located to an alternative Site. They may be re-located to a different Location within the original Site or from a Location up to the Site level and vice versa only.*

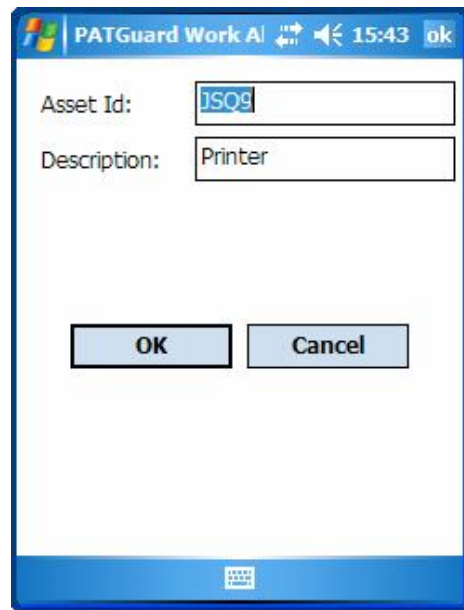
**Editing an Asset Record**

The details of Asset Records can be changed on PATGuard Work About. To do this, select and hold stylus on the required Asset to display the context menu.



**Figure 8: Asset Context Menu**

Select **Edit** to display the following.

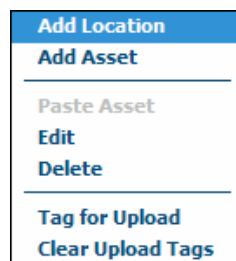


**Figure 9: Edit Asset display**

Edit the **Asset Id** and/or **Description** then select **OK** to complete the change.

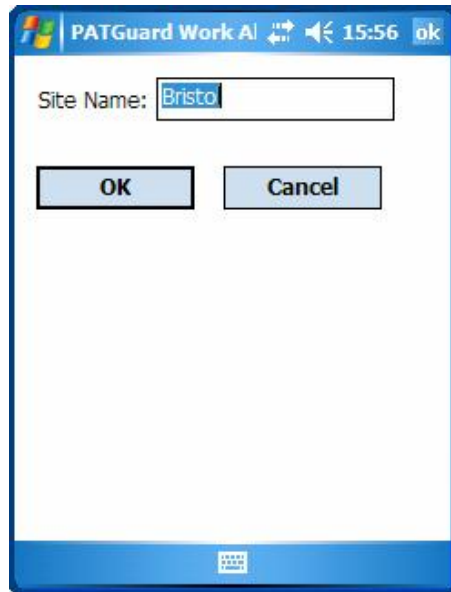
***Edit Site Name***

Select and hold the stylus on the Site Name you wish to edit to display the context menu.



**Figure 10: Site Context Menu**

Select **Edit**.

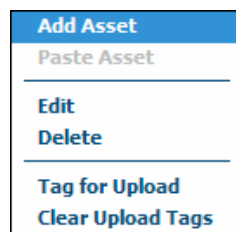


**Figure 11: Edit Site Name display**

Edit the **Site Name** and select **OK**.

***Edit Location Name***

Select and hold the stylus on the Location Name you wish to edit to display the context menu.



**Figure 12: Location Context Menu**

Select **Edit**.



Figure 13: Edit Location Name display

Edit the **Location Name** and select **OK**.

### **Add Site**

Sites can only be added at the root level. Select and hold the stylus on the root level to display the context menu.

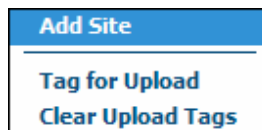
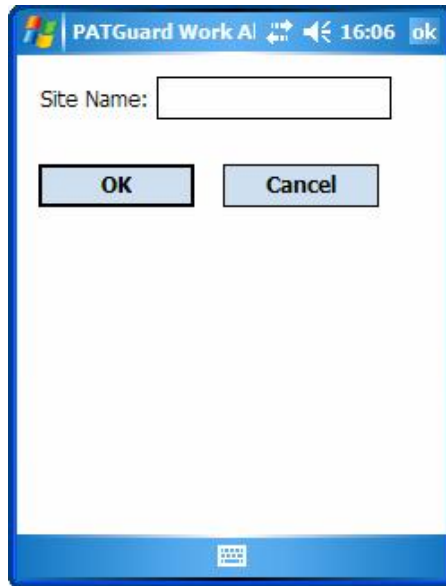


Figure 14: Root Context Menu

Select **Add Site** to display the following.



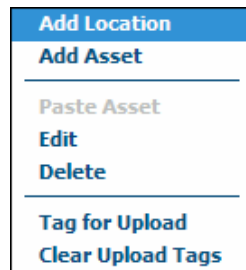


**Figure 15: Add Site display**

Enter the **Site Name** then select **OK** to add the Site.

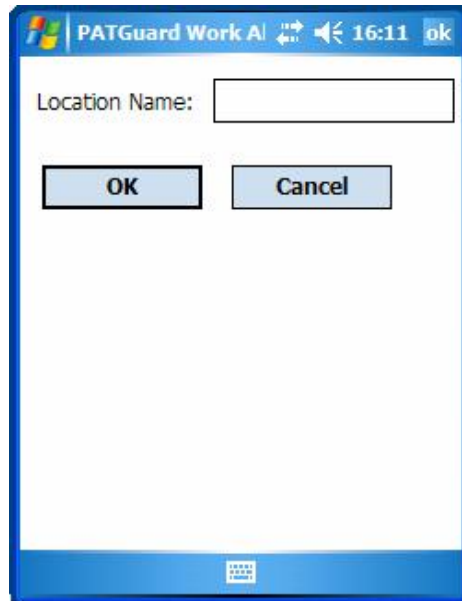
***Add Location***

Locations can only be added within a Site. Select and hold the stylus on the appropriate Site to display the context menu.



**Figure 16: Site Context Menu**

Select **Add Location** to display the following.

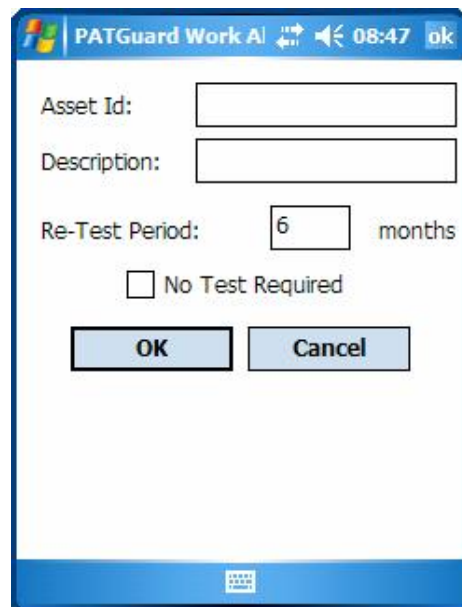


**Figure 17: Add Location display**

Enter the **Location Name** then select **OK** to add the Location.

### **Add Assets**

Assets can be added at both Sites and Locations. Select and hold the stylus on the appropriate Site or Location. From the context menu select **Add Asset** to display the following.



**Figure 18: Add Asset display**

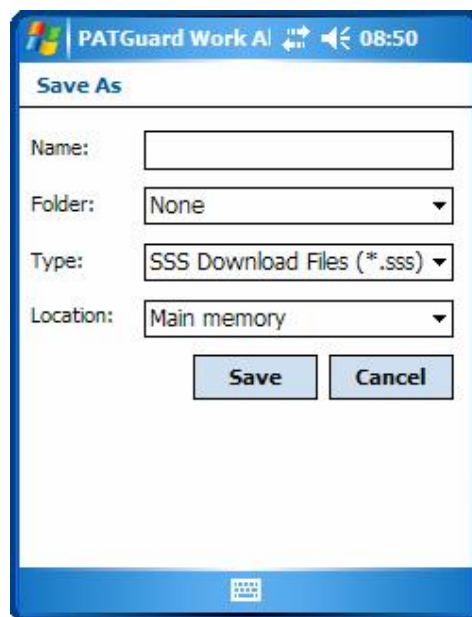
Enter the **Asset Id** and **Description**, then enter a **Re-Test Period** or select the **No Test Required** checkbox.

*Note*

*If the **No Test Required** checkbox is selected no tests can be added to this Asset.*

Then select **OK** to add the Asset.

For any given Upload file (xpg) the first time an Asset is added, a **Save As...** window is displayed for the user to enter a path and filename, so that a Download file (sss) can be created.



**Figure 19: Save As display**

All subsequent information will be saved into this Download file (sss) such as Assets, Tests and Test Results, for later Download into a PATGuard Database program.

### **Add Tests**

*Note*

*New tests can only be added to Assets that do not have any existing tests. For Asset records with tests that originated on a PATGuard database the tests cannot be altered, deleted or added to. Also if the **No Test Required** checkbox was selected for an Asset created on the PDA, tests cannot be added.*

By default selecting an Asset without any tests will enable you to select tests one by one from a drop-down menu and add them individually. But in fact tests can also be added by compiling a test sequence, which can then be added to numerous Assets.

If the Asset selected had tests assigned to it then these would be displayed for you to enter values (see **Direct Entry of Test Results**). Should the Asset have no tests the following will be displayed.

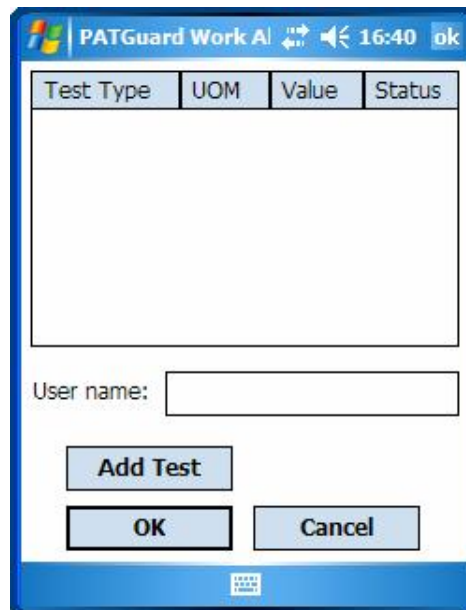


Figure 20: Add Test display

A **User name** is required to add tests to an Asset. Enter a **User name** and select **Add Test** to display the following.

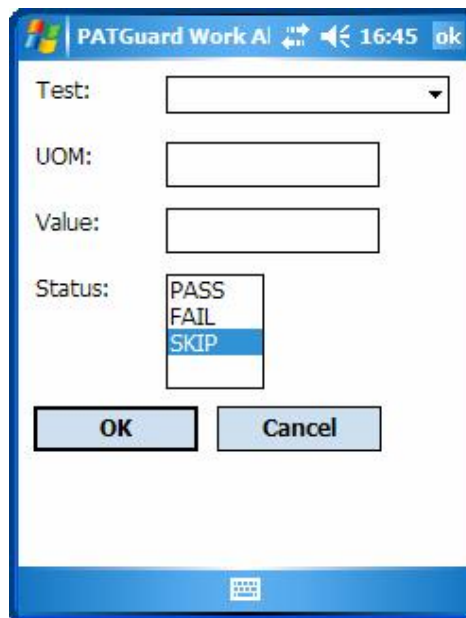


Figure 21: Add Test Parameters display

There are pre-determined PAT tests available from the **Test** drop down. But in fact the user can enter any **Test** name directly into the **Test** field. Tests selected from the drop down will have their **UOM** (Unit of

Measurement) predefined whereas for Tests you have created the **UOM** field will be blank so you can enter the appropriate **UOM**.

You can enter the **Value** if required and **Status** at this point or enter it later by leaving the **Status** set to **Skip**. Select **OK** to save the Test.

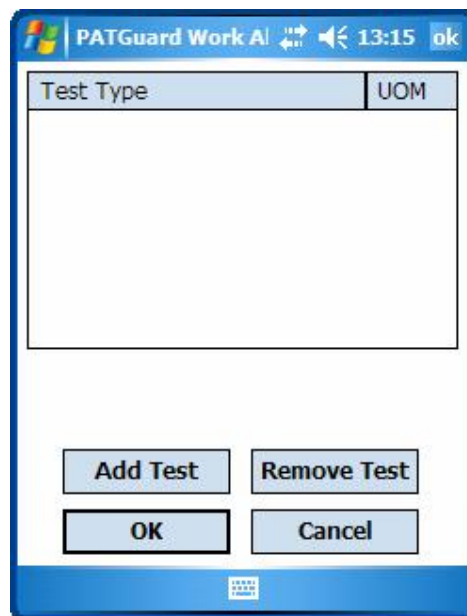
The Test you have added will appear in the **Add Test** display list. By selecting Add again and repeating the above you can compile a list of Tests. Once the list is complete select **OK**

*Note*

*Once **OK** is selected in the Add Test display it will not be possible to add any further Tests. If you wish to change the Tests in the list, select **Cancel** and restart over again.*

### **Test Sequences**

Tests can also be added to an Asset using a Test Sequence. A Test Sequence is compiled by selecting **Tools** then **Test Sequence**, which will display the following.



**Figure 22: Edit Test Sequence display**

Select **Add Test**.

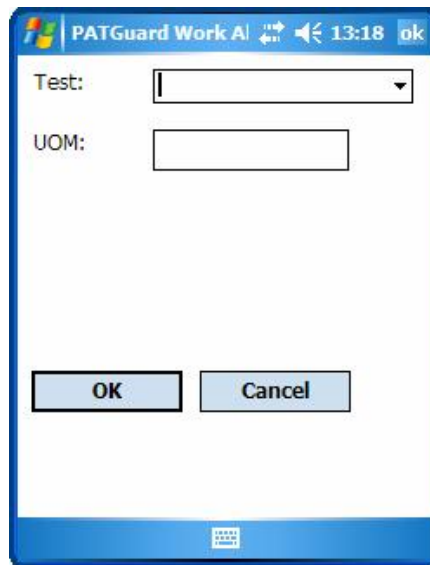


Figure 23: Add Test display

There are pre-determined PAT tests available from the **Test** drop down. But in fact the user can enter any **Test** name directly into the **Test** field. Tests selected from the drop down will have their **UOM** (Unit of Measurement) predefined whereas for Tests you have created the **UOM** field will be blank so you can enter the appropriate **UOM**. Select **OK** to save the Test into the Test Sequence.

The test added will appear in the **Test Sequence** display list. By selecting **Add** again and repeating the above you can compile a list of Tests. Once the list is complete select **OK**.

This stored Test Sequence can be added to as many Assets as is necessary in the current file. To do this select **Add Test Sequence** from the context menu of the required Assets individually.

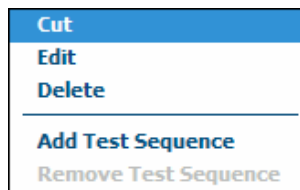


Figure 24: Asset Context Menu

The Test Sequence can be altered by selecting **Test Sequence** from the **Tools** pop-up, this allows different test sequences to be added to further Assets. Altering this Test Sequence will not affect those sequences already stored in any Asset.

To remove a Test Sequence from an Asset select **Remove Test Sequence** from the context menu of the relevant Asset.

*Note*

**Remove Test Sequence** is only available for Assets that have no test results and previously had tests added as a complete test sequence.

The user-defined Test Sequence is saved in the Download file (sss) and will be available on the PDA each time the associated Upload file (xpg) is opened, similarly if this Test Sequence is altered the Download file (sss) is updated and the new sequence will be available instead.

## Toolbar

### **File**

Selecting **File** then **Open** allows you to select the appropriate Upload file (xpg) that you wish to display and later optionally Upload into a tester.

Selecting **File** then **New** allows you to create a new file in which Sites, Locations, Assets and if required Tests and Test Results can all be added directly into the PDA.

#### *Note*

*Assets created in a **New** file cannot be Uploaded to a tester.*

### **Edit**

The **Find** option allows the user to search for an Asset by entering the Asset ID. If found the Asset is then highlighted and displayed on the main screen.

### **View**

The **View** pop-up menu allows you to filter the Asset display according to re-test type.

**All** is the default setting. With this setting all Assets will be displayed.

**Visual** is selected when Visual re-tests are to be carried out with results entered directly in the PDA.

**Full** is selected when only Assets with Full re-tests are to be displayed.

Assets with no tests will be displayed in all selections.

#### *Note*

*Regardless of the View option selected, only Assets with Full re-tests will be Uploaded into a tester. And these Assets will be filtered according to re-test data from the PATGuard database of the Asset record and tester selected.*

### **Tools**

The **Download** option enables the program to receive download data direct from a PAT tester.

The **Upload** option enables the program to send re-test data direct to a PAT tester.

The **Test Sequence** option allows the user to compile a list of tests into a sequence to be added to numerous Assets one by one.

### **Help**

The **About** option will display information about PATGuard Work About.

## Direct entry of Test Results

Test results can be manually entered directly into PATGuard Work About. Select the Asset for which Test Results are to be recorded to display the associated tests.

If both Full and Visual re-tests are possible for the selected Asset the following message will prompt you choose the test type.

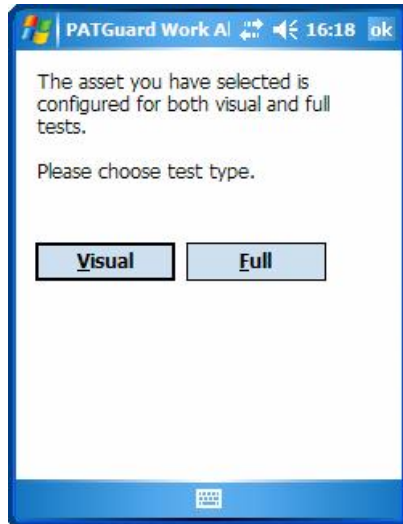


Figure 25: Choose Test Type display

Select the appropriate Test Type to display the Tests.

### Note

*Visual Tests are defined as Tests for which no measurement value is required. The converse is true for Full Tests i.e. they are defined as having a measurement value.*

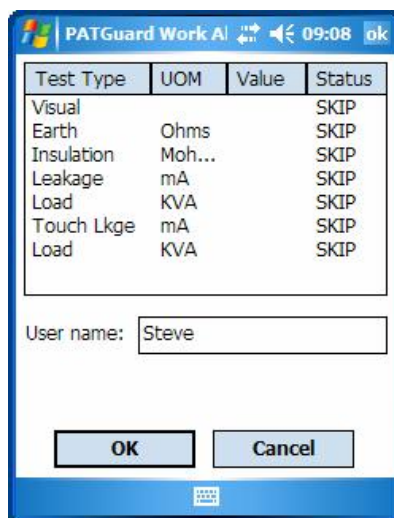


Figure 26: Tests display



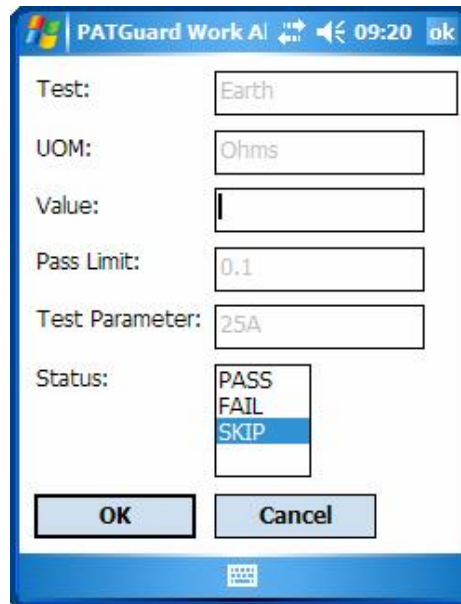
*Note*

*The individual tests will vary depending on Tests assigned to the Asset Record in the PATGuard database or directly entered earlier on the PDA.*

Tests can only be added to an Asset which does not have any Tests (see **Add Tests**).

As a **User name** needs to be assigned when Test Results are entered directly, it is necessary for you to enter your name into the **User name** field before selecting the Test. The **User name** will then remain for every test entry window until changed.

To enter the Results for a Test, simply select the Test.



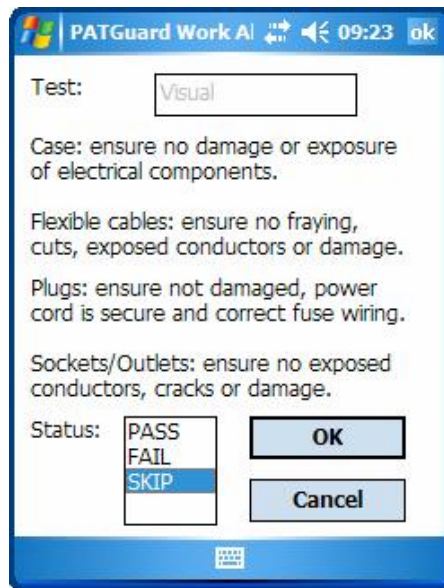
**Figure 27: Test Result Direct Entry display**

Enter the Test Result into the **Value** field, select the appropriate **Status** and select **OK** to record the Test Result.

*Note*

*While the format of the Test Result Entry window will remain as shown above, the content will vary depending upon the specific test and parameters as defined by the Asset record in the PATGuard database or Tests entered directly earlier on the PDA.*

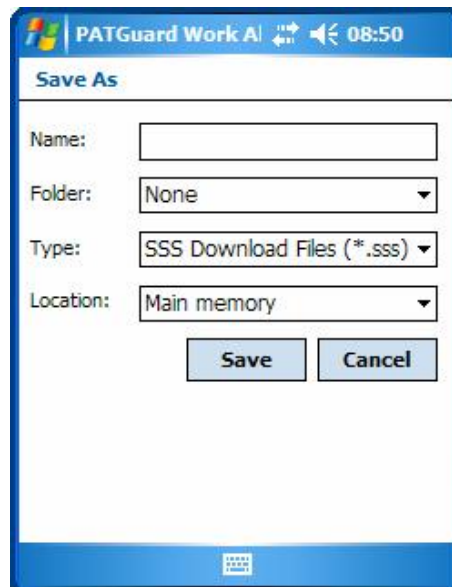
The Visual Test display for portable appliances is different from other tests and is shown below.



**Figure 28: Visual Test display**

If this Upload file (xpg) was created on the PDA all directly entered Test Results will be saved to the Download file (sss) already associated with it.

However if this Upload file (xpg) was created in a PATGuard database program it will not yet be associated with a Download file (sss) and you will be prompted to create one at this stage. The following will be displayed in this case.



**Figure 29: Download File Browse display**

All subsequent test results will be stored in this Download file (sss) for later transfer back to a PATGuard database.

## Using Bluetooth

Before a Bluetooth connection can be used by the program it is necessary to establish a partnership between the tester Bluetooth and the PDA Bluetooth. This is only required on initial set up, not during every data transfer.

Establishing partnerships can vary with the Microsoft platform on the PDA.

## Using Bluetooth with Microsoft Pocket PC

### *Note*

*Some of the Figures in this section may be different from those shown on your PDA due to differences in operating platforms, build level, Microsoft application versions and other Bluetooth devices and partnerships.*

It is necessary to establish the correct **COM Port** for PATGuard Work About. Use the Bluetooth setting information on the PDA. From **Start** select **Settings**.



**Figure 30: Start Menu**

Select the **Connections** Tab, then the **Bluetooth icon**.

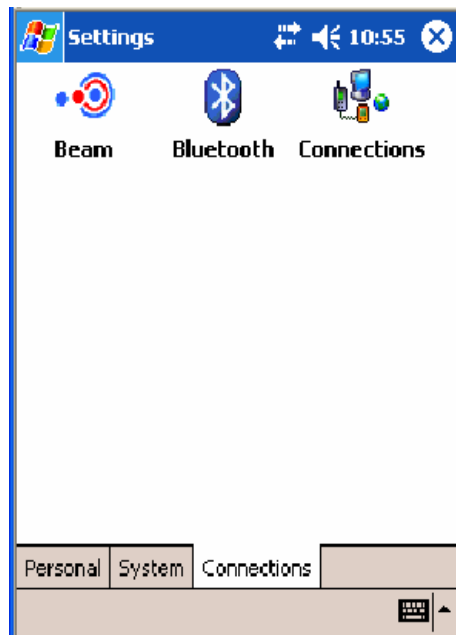


Figure 31: Settings Menu

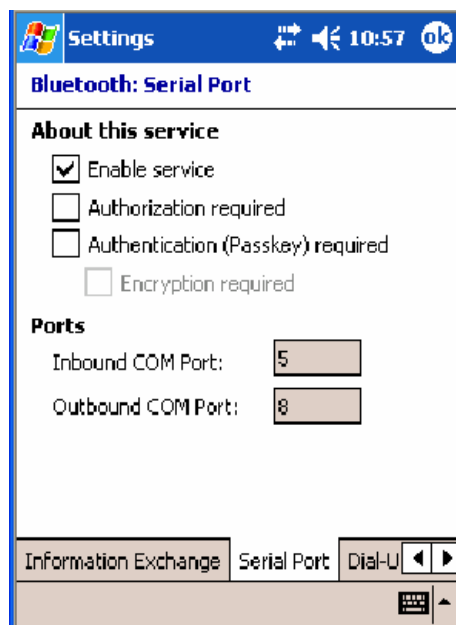


Figure 32: Bluetooth: Serial Port display

Scroll the tabs at the bottom until the **Serial Port** tab is displayed. Select this tab. Ensure the **Enable service** option is checked. Two Ports are shown; **Inbound COM Port** and **Outbound COM Port**.

The **Inbound COM Port** is for PrimeTest 300 / 350.

The **Outbound COM Port** is for Supernova and Europa PAT testers.

Make a note of the **COM Port** numbers for the testers you will be using. The **COM Port** number is required for both Upload and Download actions.

### **Bluetooth Pairing – PrimeTest 300 / 350**

Before any data transfer can take place it will be necessary for the PDA Bluetooth to be paired with the PrimeTest Bluetooth.

With the PDA powered on, Search for the PDA Bluetooth signal and set it into the Bluetooth Favourites PC field. Please refer to your tester Operating Instruction booklet for details.

### **Bluetooth Pairing – Supernova and Europa PAT Testers**

*Note*

*This is only required if your PDA does not have an RS232 serial port and relies upon a Bluetooth SNEU Adaptor (see Accessories) to communicate with the tester.*

Before any data transfer can take place with Supernova and Europa PAT testers via the Bluetooth SNEU Adaptor it will be necessary to pair this with the PDA Bluetooth.

To do this, plug the Adaptor into the RS232 port of the tester. The Adaptor, when used with Europa PAT testers will also require external power. Connect the power lead to the Adaptor and plug the power supply into a suitable mains outlet. Adaptors used with Supernova testers do not require any external power. Ensure the tester is power up.

To pair the Adaptor with the PDA, start the **Bluetooth Manager** program on the PDA.



**Figure 33: Bluetooth Manager display**

*Note*

*This display may show icons for other Bluetooth devices that have previously been connected.*

Select **New** then **Connect** to display the following.

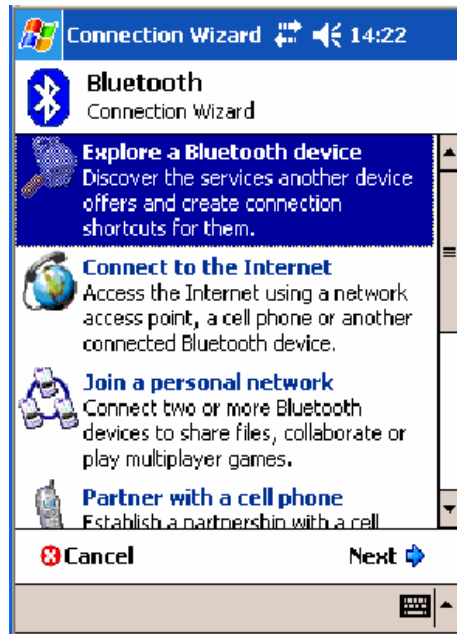


Figure 34: Connection Wizard display

Select **Next** to display the following.



Figure 35: Explore a Bluetooth device display

Tap in the **Device** box as indicated on the screen to search for the Adaptor.

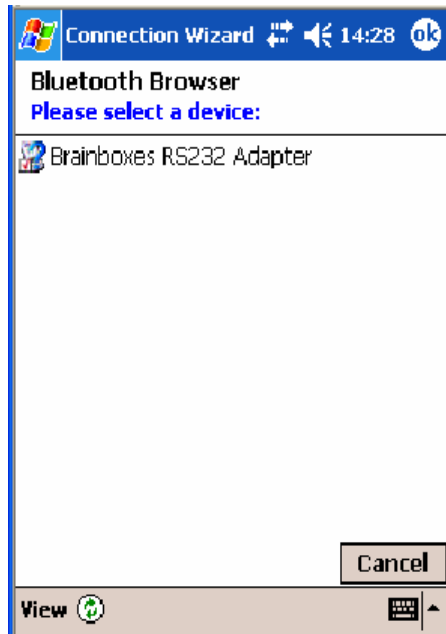


Figure 36: Bluetooth Browser display

*Note*

*Other Bluetooth devices in the vicinity may have been picked up or added earlier and displayed here.*

Select the **Brainboxes RS232 Adaptor** as this is the Adaptor plugged into the tester. This will display the following.



Figure 37: Bluetooth Service Selection display

Select **Serial 01**, to display the following.

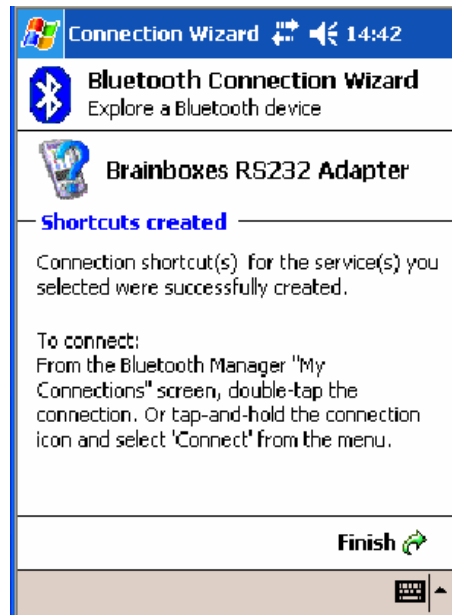


Figure 38: Bluetooth Connection Wizard - final display

Select **Finish** to complete the Bluetooth pairing. The following display shows the icon that will need to be activated before each Upload or Download.



Figure 39: Bluetooth My Shortcuts display



## Using Bluetooth with Windows Mobile v5.0

*Note*

*Some of the Figures in this section may be different from those shown on your PDA due to differences in build level, Microsoft application versions and other Bluetooth devices and partnerships.*

### **Establishing Bluetooth Partnerships – PrimeTest 300 / 350**

It will now be necessary to set the PDA Bluetooth in the PrimeTest unit. Ensure the PDA is powered on with Bluetooth active. At the PrimeTest select Configuration > Bluetooth Favourites from the Menu. Select Computer. Press Setup then Search to find the PDA Bluetooth. Select the appropriate Bluetooth identifier and press Add New. Select OK when the identifier is set in the Computer field. Then OK to exit Bluetooth Favourites. Please refer to your tester Operating Instruction booklet for further details.

### **Establishing Bluetooth Partnerships – Supernova and Europa PAT Testers**

*Note*

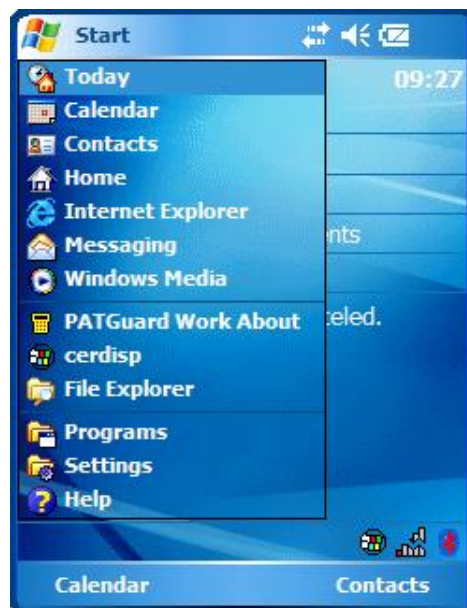
*This is only required if your PDA does not have an RS232 serial port and relies upon a Bluetooth SNEU Adaptor (see Accessories) to communicate with the tester.*

Before any data transfer can take place with Supernova and Europa PAT testers via the Bluetooth SNEU Adaptor it will be necessary to pair this with the PDA Bluetooth.

To do this, plug the Adaptor into the RS232 port of the tester. The Adaptor, when used with Europa PAT testers will also require external power. Connect the power lead to the Adaptor and plug the power supply into a suitable mains outlet. Adaptors used with Supernova testers do not require any external power. Ensure the tester is power up.

### **Establishing Bluetooth Partnerships – PDA**

From the **Start** menu select **Settings**.



**Figure 40: Start Menu**

Select the **Connections** Tab, then the **Bluetooth** icon.

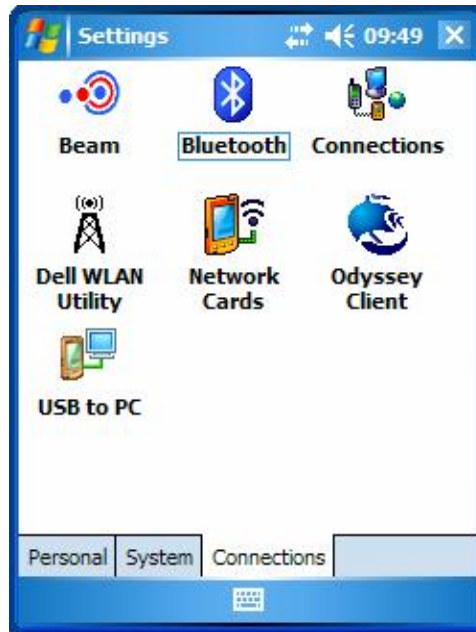


Figure 41: Settings Menu

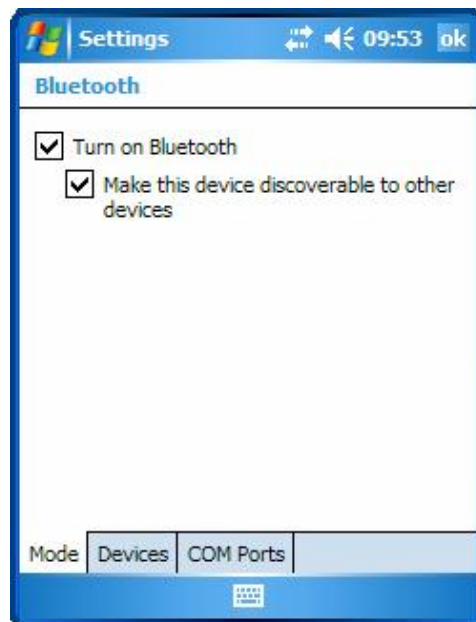


Figure 42: Bluetooth display

Select the **Devices** tab.

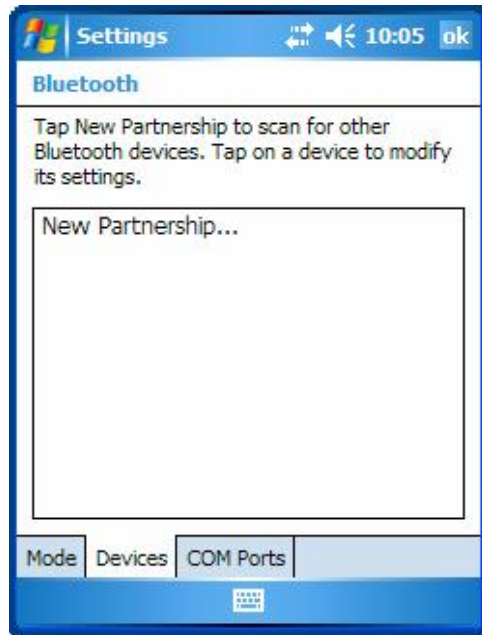


Figure 43: Bluetooth New Partnership display

Select **New Partnership...** to start scanning for Bluetooth Devices.



Figure 44: Bluetooth Scanning display

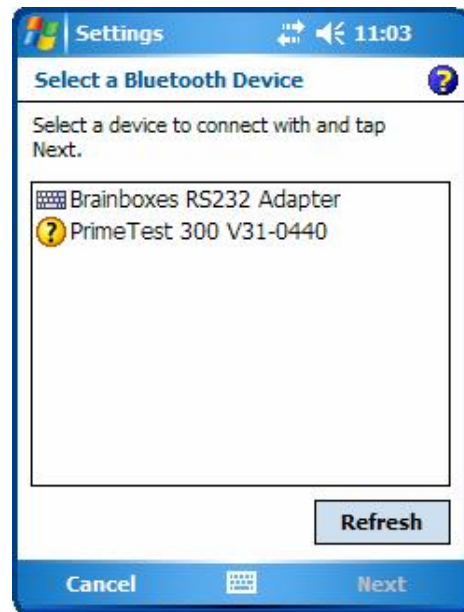


Figure 45: Bluetooth Device Selection display

Select the appropriate device, then select **Next**.

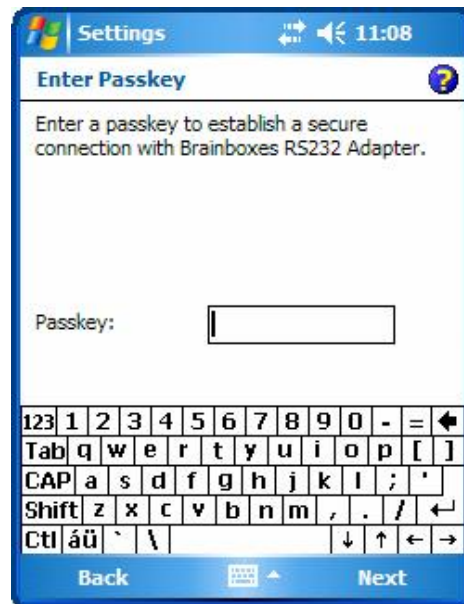


Figure 46: Bluetooth Enter Passkey display

Enter the default **Passkey** of four zeros. Then select **Next**.

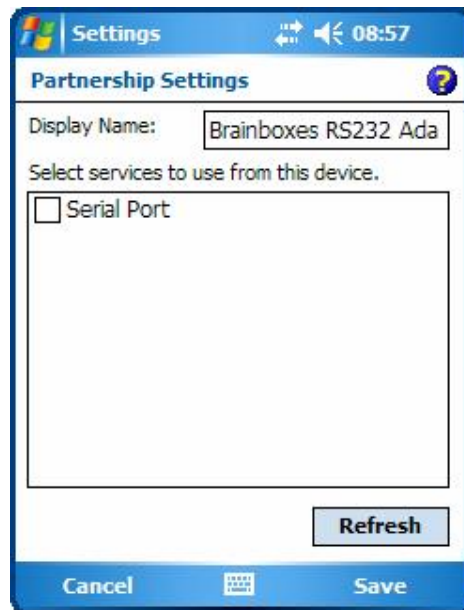


Figure 47: Bluetooth Partnership Settings display

Tap the **Serial Port** checkbox. Select **Finish**.

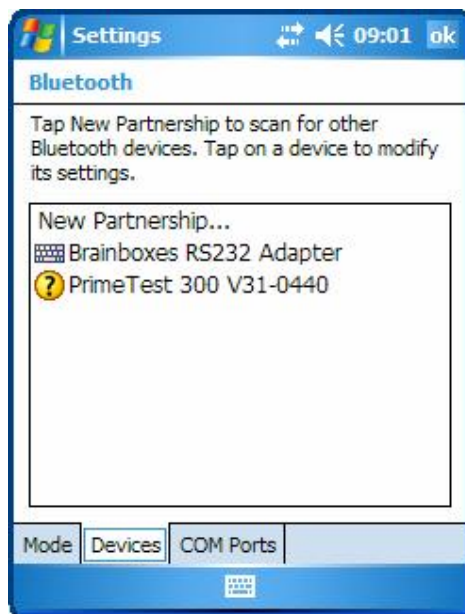
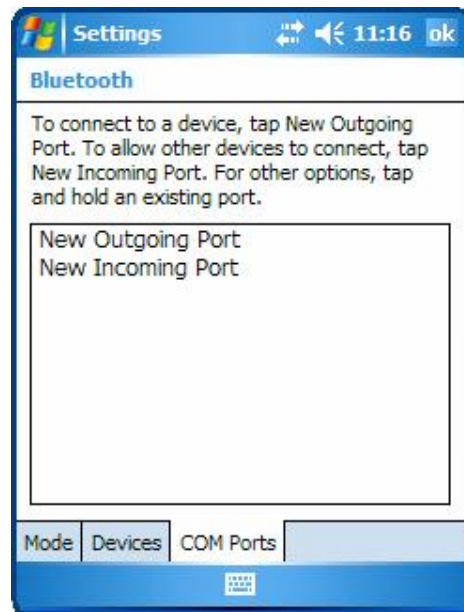


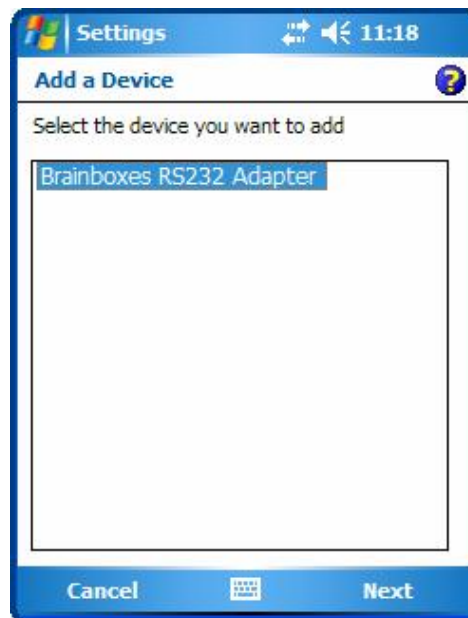
Figure 48: Bluetooth Partnerships display

Select the **COM Ports** tab.



**Figure 49: COM Ports Tab**

Select **New Outgoing Port** for the Blue Tooth SNEU Adaptor or **New Incoming Port** for the PrimeTest 300 / 350. The following will be similar for either connection.



**Figure 50: Add a Device display**

Select **Next**.

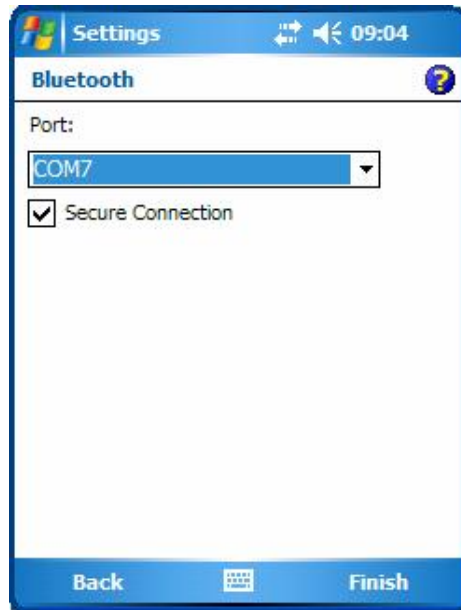


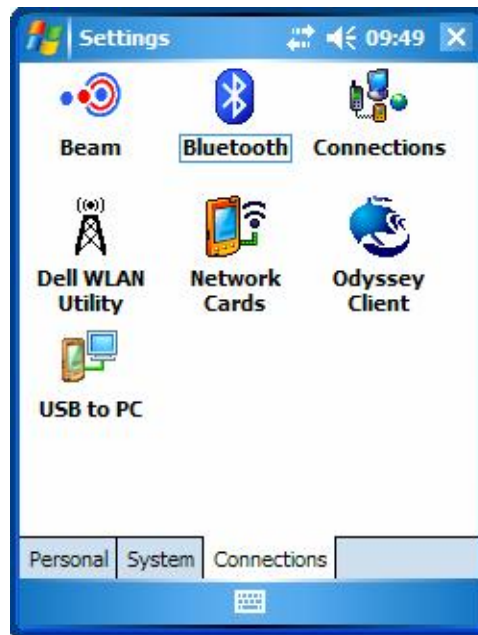
Figure 51: Bluetooth COM Port display

Select **Finish** to complete the Partnership.



Figure 52: COM Port assigned display

Select **ok** to close the Connections tab.



**Figure 53: Settings display**

Close the Settings window by selecting the cross in the top right hand corner.

## Upload

*Note*

*Only the Seaward Supernova, Europa PAT and PrimeTest 300 / 350 family of testers can be Uploaded from PATGuard Work About directly. Supernova and Europa PAT type testers will require a Bluetooth SNEU Adaptor (see Accessories) if your PDA does not have an RS232 serial port.*

You can Upload Assets from PATGuard Work About into the tester either by tagging which Assets you want or you can Upload all the Assets in the Upload file (xpg) currently open.

*Note*

*You can only Upload Assets from PATGuard Work About into a tester if the Upload file (xpg) originated from a PATGuard Database program.*

### **Tagging Assets**

To tag individual Assets for Upload simply select the box immediately to the left of the required Asset's Description. A tick will appear in the box to denote its selection.



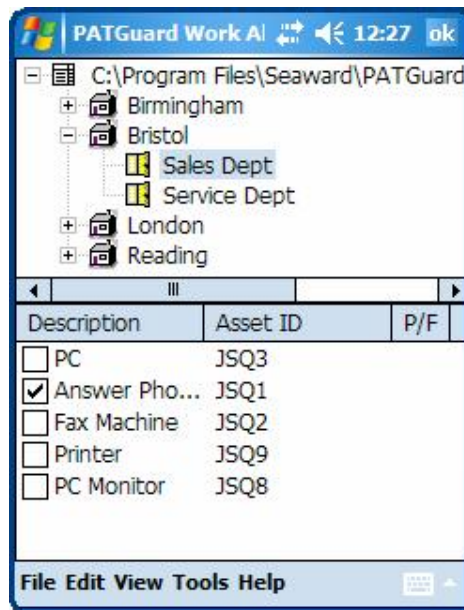


Figure 54: Tagged Assets

To tag all Assets within a Site or Location select **Tag for Upload** from the context menu of the relevant Site or Location.

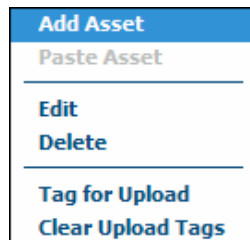


Figure 55: Location Context Menu

You can tag as many or as few Assets as required and the tag information is stored in the Upload file (xpg) and thus it will remain the same the next time you open that file on the PDA.

To remove a tag from a single Asset simply select the corresponding ticked checkbox, the tick will be removed and this will indicate the Asset is no longer tagged. To remove the tags from all Assets below a Site or Location select **Clear Upload Tags** from the context menu of the required Site or Location.

If almost all the Assets need to be Uploaded it may be useful to select **Tag for Upload** from the context menu of the root, then select the unwanted Assets individually to remove their tags.

### Uploading Assets

To Upload Assets select **Upload** from the **Tools** pop-up.

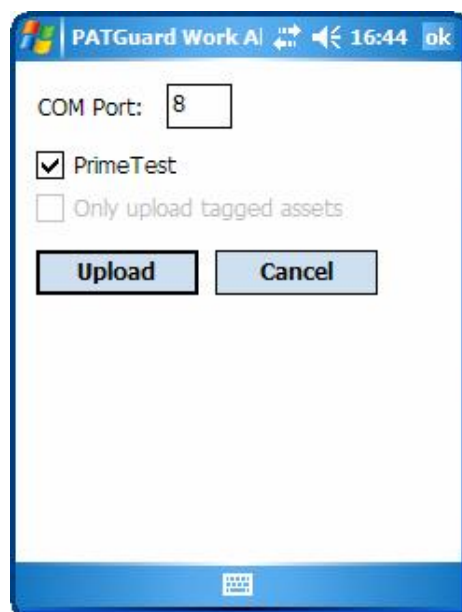


Figure 56: Upload display

### **PrimeTest 300 / 350**

At the tester use the tester menus to select 'Upload from PC' and ensure the Bluetooth connection is established. Please refer to the tester Operating Instructions concerning Upload from PC.

Ensure the **Prime Test** box is checked. It may be necessary to set the correct **COM Port** before the first Upload (see Using Bluetooth). Once set the program will remember the port number until changed by the user.

If you have Tagged Assets in the Upload file (xpg) the **Only upload tagged assets** checkbox will be available and if you only wish to Upload tagged Assets then ensure this box is checked.

Select **Upload** and acknowledge the advisory message and the Upload will commence.

Having prepared the tester for re-testing, use PATGuard Work About as a 'To do' list of Assets to be tested while carrying out re-tests. Please refer to the tester Operating Instructions concerning automatic testing from Upload Assets.

### **Supernova / Europa PAT Testers**

#### *Note*

*If your PDA does not have an RS232 serial port you will need a Bluetooth SNEU Adaptor (see Accessories) to communicate with these testers. If this is the case the Bluetooth SNEU Adaptor will need to be paired or partnered with the PDA (see Using Bluetooth) before the first Upload or Download action.*

If using a Bluetooth SNEU Adaptor, plug the Adaptor into the RS232 Port of the tester. The Adaptor, when used with Europa PAT testers will require external power. Connect the power lead to the Adaptor and plug the power supply into a suitable mains outlet. Adaptors used with Supernova testers do not require any external power. Ensure the tester is powered up.

Ensure the PrimeTest box is not checked. If you have Tagged Assets in the Upload file (xpg) the **Only upload tagged assets** checkbox will be available and if you only wish to Upload tagged Assets then ensure this box is checked.

Select **Upload** on the Upload display of the PDA. Use the tester's menu system to select **Remote Mode** then acknowledge the advisory message on the PDA and the Upload will commence.

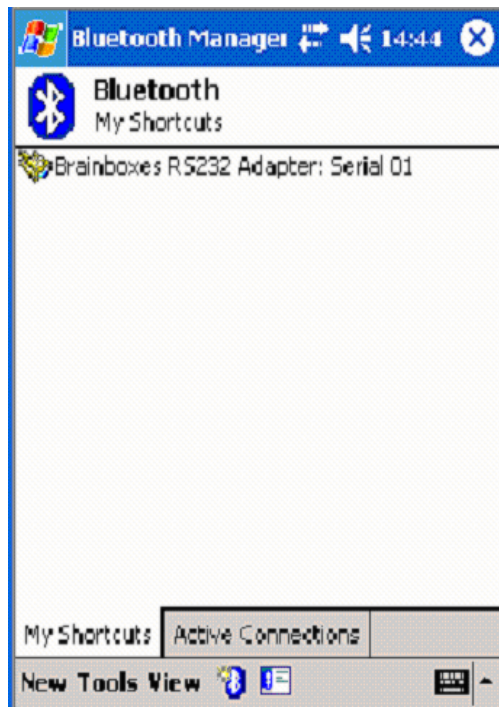
Having prepared the tester for re-testing, use PATGuard Work About as a 'To do' list of Assets to be tested while carrying out re-tests. Please refer to the tester User Instructions concerning Automatic testing from Upload Assets.

### Windows Pocket PC

*Note*

*For Windows Pocket PC to Upload to the tester via a Bluetooth SNEU Adaptor the following procedure is necessary to make the Bluetooth connection. For Windows Mobile 5.0 no connection procedure is necessary.*

Prior to the Upload action we need to establish the Bluetooth connection. Start the **Bluetooth Manager** program on the PDA.



**Figure 57: Bluetooth Manager My Shortcuts display**

Select and hold the **Brainboxes RS232 Adaptor:Serial 01**.

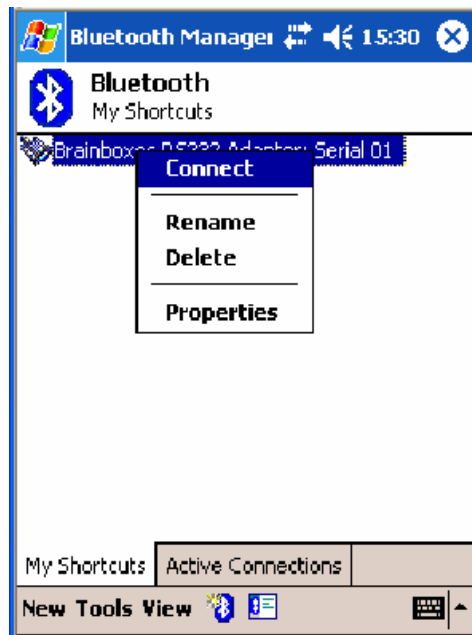


Figure 58: Connect to the Adaptor

Select **Connect**. The following message will be displayed for a short time.

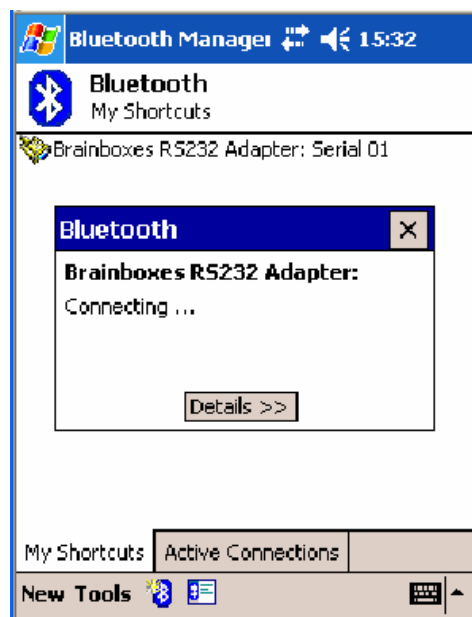
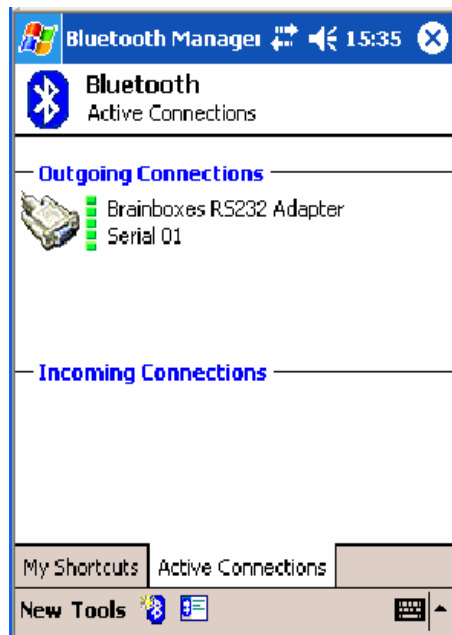


Figure 59: Brainboxes RS232 Adaptor Connecting...

When the message is no longer displayed, select the **Active Connections** tab.



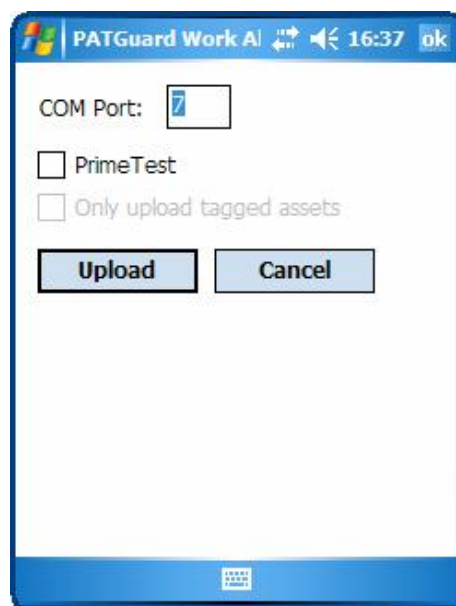
**Figure 60: Adaptor Connected**

As long as the **Outgoing Connections** is established Upload is possible.

*Note*

*Bluetooth connection can become disconnected if not activated. **Do not delay, commence the Upload immediately.** If it becomes disconnected re-connect as described above before retrying Upload.*

Select the PATGuard Work About program. From the **Tools** pop-up select **Upload**.



**Figure 61: Upload display**

Ensure the **Prime Test** box is unchecked. It will also be necessary to set the correct **COM Port** before the first Upload action (see Using Bluetooth). Once set the program will remember it unless changed by the user.

If you have Tagged Assets in the Upload file (xpg) the **Only upload tagged assets** checkbox will be available and if you only wish to Upload tagged Assets then ensure this box is checked.

Select **Upload** on the Upload display. Use the tester's menu system to select **Remote Mode** then acknowledge the advisory message on the PDA and the Upload will commence.

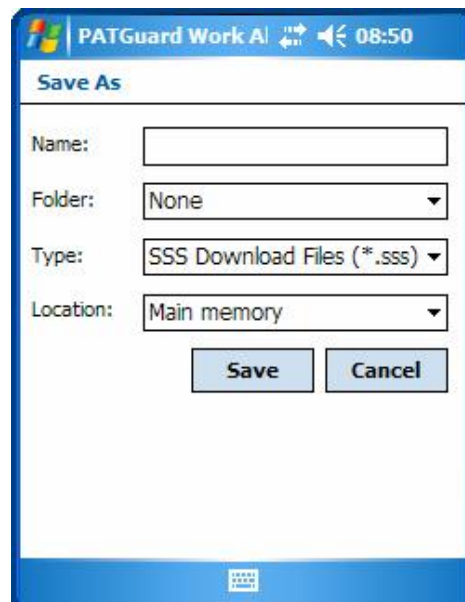
Having prepared the tester for re-testing, use PATGuard Work About as a 'To do' list of Assets to be tested while carrying out re-tests. Please refer to the tester User Instructions concerning Automatic testing from Upload Assets.

## Download

### Note

*Only the Seaward Supernova, Europa PAT and PrimeTest 300 / 350 family of testers can be downloaded direct to PATGuard Work About. Supernova and Europa PAT type testers will require a Bluetooth SNEU Adaptor (see Accessories) if your PDA does not have an RS232 serial port. If this is the case the Bluetooth SNEU Adaptor will need to be paired with the PDA (see Bluetooth Pairing- Supernova and Europa Testers) before the first Upload or Download action.*

To Download Test Results to PATGuard Work About, select **Download** from the **Tools** pop-up. A **Save As...** window is displayed so that a directory can be chosen and filename given for the Download file.



**Figure 62: Download File Browse display**

Once the file **Name** has been entered and **Save** selected, the Download display appears.

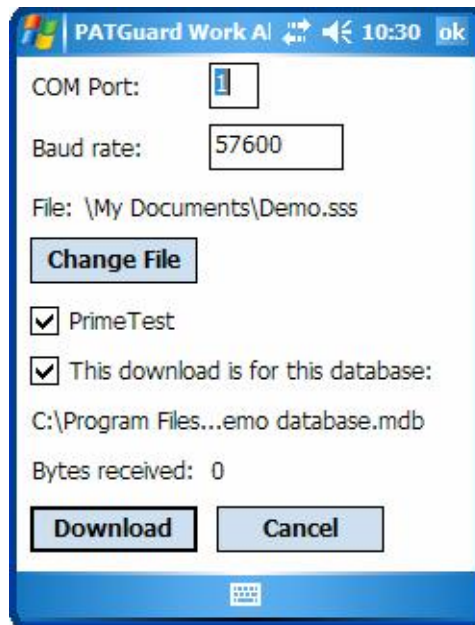


Figure 63: Download display

The **COM Port** and **Baud rate** settings are dependent on the **PrimeTest** check box. The **Baud rate** will be the default setting for the tester. If this has been changed on the Tester then it will necessary to change it here.

The correct **COM Port** will have to be set initially (see Using Bluetooth) but will be remembered by the program according to the **PrimeTest** checkbox selection.

A Download action can be performed without any Upload file (xpg) being open whereas an Upload action to a tester always contains the data from the opened Upload file (xpg) which maybe modified by direct entry at the PDA. So when downloading it is possible to associate the Download file (sss) created with the currently displayed PATGuard database. This is useful as it can help prevent the wrong database in PATGuard database programs from being updated when processing the Download file (sss). Checking the box for **This download is for this database** will place a marker in the Download file (sss) so that a warning message is displayed should an attempt be made to open the Download file in the wrong database on the PC.

### **PrimeTest 300 / 350**

Ensure the **Prime Test** box is checked. It will also be necessary to set the correct **COM Port** before the first Download. Once set the program will remember this port number until changed by the user.

Use the tester menu to select Download to PC and ensure the Bluetooth connection is established. Please refer to the tester Operating Instructions concerning Download to PC.

Select Download on the Download display of the PDA. Then select Send on the tester.

The **Bytes received** value should count up on the PDA as the download proceeds.

The Download file (sss) that has been created can be sent to the PC using normal PDA to PC file transfer methods for example; email, file synchronisation, Bluetooth, memory cards etc.

The Download file (sss) will be processed when opened in a PATGuard database.

### **Supernova / Europa PAT Testers**

#### *Note*

*If your PDA does not have an RS232 serial port you will need a Bluetooth SNEU Adaptor (see Accessories) to communicate with these testers. If this is the case the Bluetooth SNEU Adaptor will need to be paired or partnered with the PDA (see Using Bluetooth) before the first Upload or Download action. Also if the default Baud Rate has been changed on the tester (and on the PATGuard program) it must be changed back to 9600 as this is the necessary Baud Rate for the Bluetooth SNEU Adaptor.*

If using a Bluetooth SNEU Adaptor, plug the Adaptor into the Serial Port of the tester. The Adaptor, when used with Europa PAT testers will require external power. Connect the power lead to the Adaptor and plug the power supply into a suitable mains outlet. Adaptors used with Supernova testers do not require any external power. Ensure the tester is powered up.

Ensure the **Prime Test** box is unchecked. It may be necessary to set the correct **COM Port** before the first Download (see Using Bluetooth). Once set the program will remember this port number until changed by the user.

On the Main Menu of the tester select DOWNLOAD RESULTS. Ensure the following are set on the Download screen:

Destination is set to PC  
Baud Rate is 9600  
Download Format set to SSS.

Select OK.

On the Search screen set search criteria or leave default (for all results).

Select **Download** on the Download display of the PDA. Then select Search on the tester.

The **Byte received** value should count up on the PDA as the download proceeds.

The Download file (sss) that has been created can be sent to the PC using normal PDA to PC file transfer methods for example; email, file synchronisation, Bluetooth, memory cards etc.

The Download file (sss) will be processed when opened in a PATGuard database.

### **Windows Pocket PC**

#### *Note*

*For Windows Pocket PC to Download to the tester via a Bluetooth SNEU Adaptor the following procedure is necessary to make the Bluetooth connection. For Windows Mobile 5.0 no connection procedure is necessary.*



Prior to the Download action the Bluetooth connection needs to be established. Start the **Bluetooth Manager** program on the PDA.

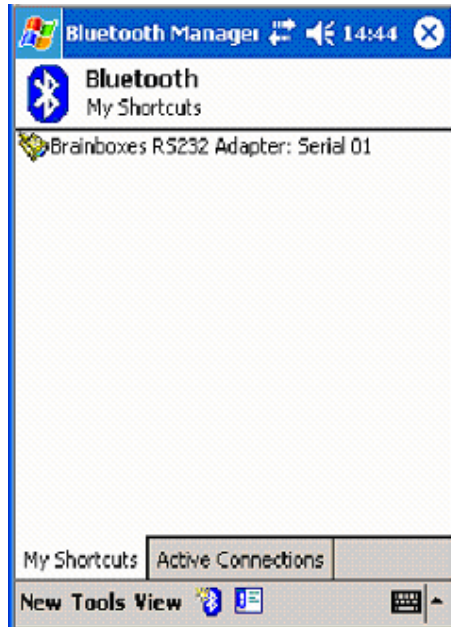


Figure 64: Bluetooth My Shortcuts display

Select and hold the **Brainboxes RS232 Adaptor:Serial 01**.

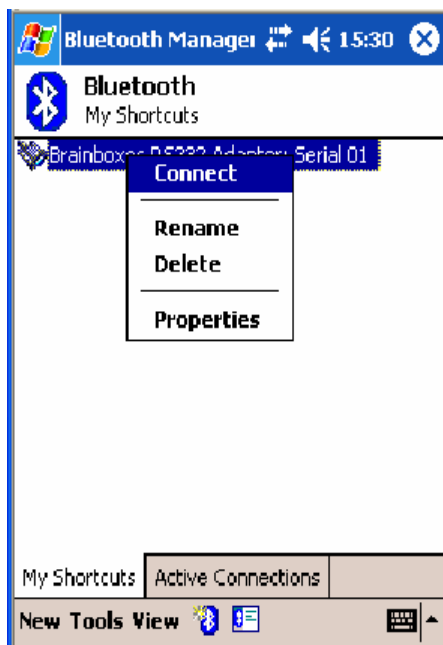


Figure 65: Connect to the Adaptor

Select **Connect**. The following message will be displayed for a short time.

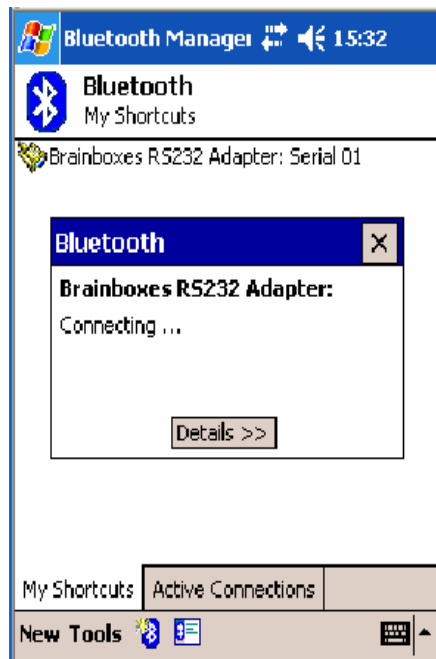


Figure 66: Brainboxes RS232 Adaptor Connecting...

When the message is no longer displayed, select the **Active Connections** tab.

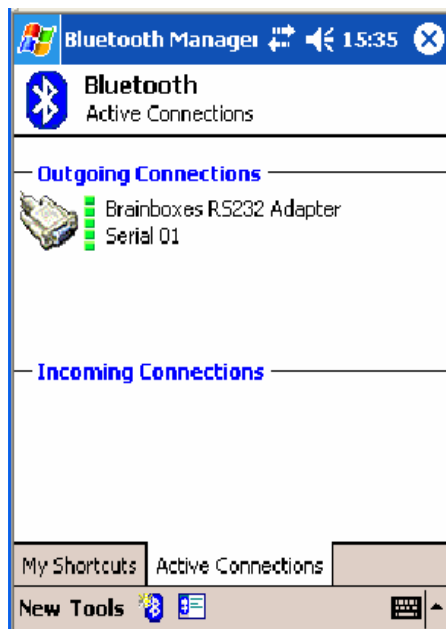


Figure 67: Adaptor Connected

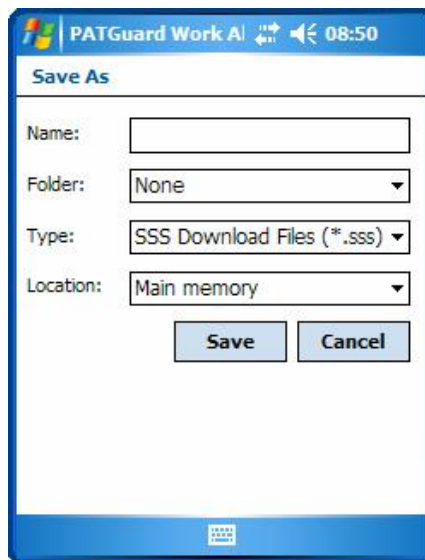
As long as the **Outgoing Connections** is established Download is possible.

*Note*

*Bluetooth connection can become disconnected if not activated. **Do not delay, commence the Download immediately.** If it becomes disconnected re-connect as described above before retrying Upload.*

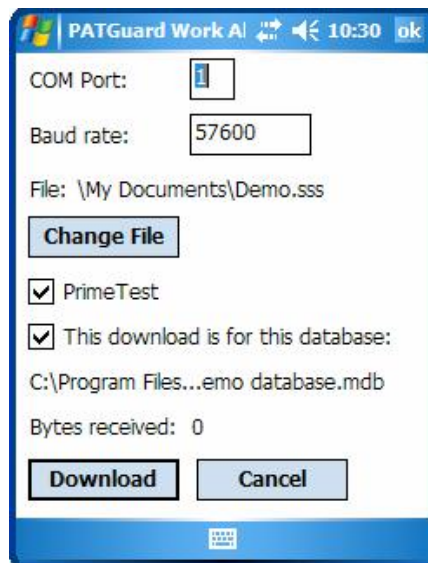
Select the PATGuard Work About program.

To Download Test Results to PATGuard Work About, select Download from the **Tools** pop-up. A **Save As...** window is displayed so that a directory can be chosen and filename given for the Download file.



**Figure 68: Download File Browse display**

Once the file **Name** has been entered and **OK** selected, the Download display appears.



**Figure 69: Download display**

The **COM Port** and **Baud rate** setting are dependent on the **PrimeTest** check box. The **Baud rate** will be the default setting for the tester. If this has been changed on the Tester then it will necessary to change it here.

The correct **COM Port** will have to be set initially (see Using Bluetooth) but will be remembered by the program according to the **PrimeTest** checkbox selection.

A Download action can be performed without any Upload file (xpg) being open whereas an Upload action to a tester always contains the data from the opened Upload file (xpg) which maybe modified by direct entry at the PDA.. So when downloading it is possible to associate the Download file (sss) created with the currently displayed PATGuard database. This is useful as it can help prevent the wrong database in PATGuard database programs from being updated when processing the Download file (sss). Checking the box for **This download is for this database** will place a marker in the Download file (sss) so that a warning message is displayed should an attempt be made to open the Download file in the wrong database on the PC.

*Note*

*If your PDA does not have an RS232 serial port you will need a Bluetooth SNEU Adaptor (see Accessories) to communicate with these testers. If this is the case the Bluetooth SNEU Adaptor will need to be paired or partnered with the PDA (see Using Bluetooth) before the first Upload or Download action. Also if the default Baud Rate has been changed on the tester (and on the PATGuard program) it must be changed back to 9600 as this is the necessary Baud Rate for the Bluetooth SNEU Adaptor.*

Plug the Adaptor into the Serial Port of the tester. The Adaptor, when used with Europa PAT testers will require external power. Connect the power lead to the Adaptor and plug the power supply into a suitable mains outlet. Adaptors used with Supernova testers do not require any external power. Ensure the tester is powered up.

Ensure the **Prime Test** box is unchecked. It may be necessary to set the correct **COM Port** before the first Download (see Using Bluetooth). Once set the program will remember it unless changed by the user.

On the Main Menu of the tester select DOWNLOAD RESULTS. Ensure the following are set on the Download screen:

Destination is set to PC  
Baud Rate is 9600  
Download Format set to SSS.

Select OK.

On the Search screen set search criteria or leave default (for all results).

Select **Download** on the Download display of the PDA. Then select Search on the tester.

The **Byte received** value should count up on the PC as the download proceeds.

The Download file (sss) that has been created can be sent to the PC using normal PDA to PC file transfer methods for example; email, file synchronisation, Bluetooth, memory cards etc.

The Download file (sss) will be processed when opened in a PATGuard database.

## System Requirements

Microsoft Windows CE

Pocket PC

Pocket PC 2002

Windows Mobile 2003

Windows Mobile 2003 Second Edition

Windows Mobile 5.0

Bluetooth for Windows CE

## Accessories

<i>Product Description</i>	<i>Part Number</i>
Additional PDA Licences	336A913
Bluetooth SNEU Adaptor	339A962
PATGuard Work About Update (to latest version)	336A914

## Warranty and Support

- Seaward Electronic Ltd. provide a 1 year warranty for this software program.
- Telephone Support is provided free for PATGuard Work About for the first 30 days after installation and is subject to registration. Please use the Registration Fax Back form below to register this software program.
- To receive Telephone Support after the first 30 days, a PATGuard Software Support Agreement would need to be in force or a new agreement taken out directly with Seaward Electronic Ltd.

For this and further information contact:

Seaward Electronic Limited  
Bracken Hill  
South West Industrial Estate  
Peterlee  
Co. Durham  
SR8 2SW  
England

[www.seaward.co.uk](http://www.seaward.co.uk)

e-mail: [support@seaward.co.uk](mailto:support@seaward.co.uk)

Telephone Support Helpline: +44 (0)191 5878718

Fax: +44 (0)191 5860227